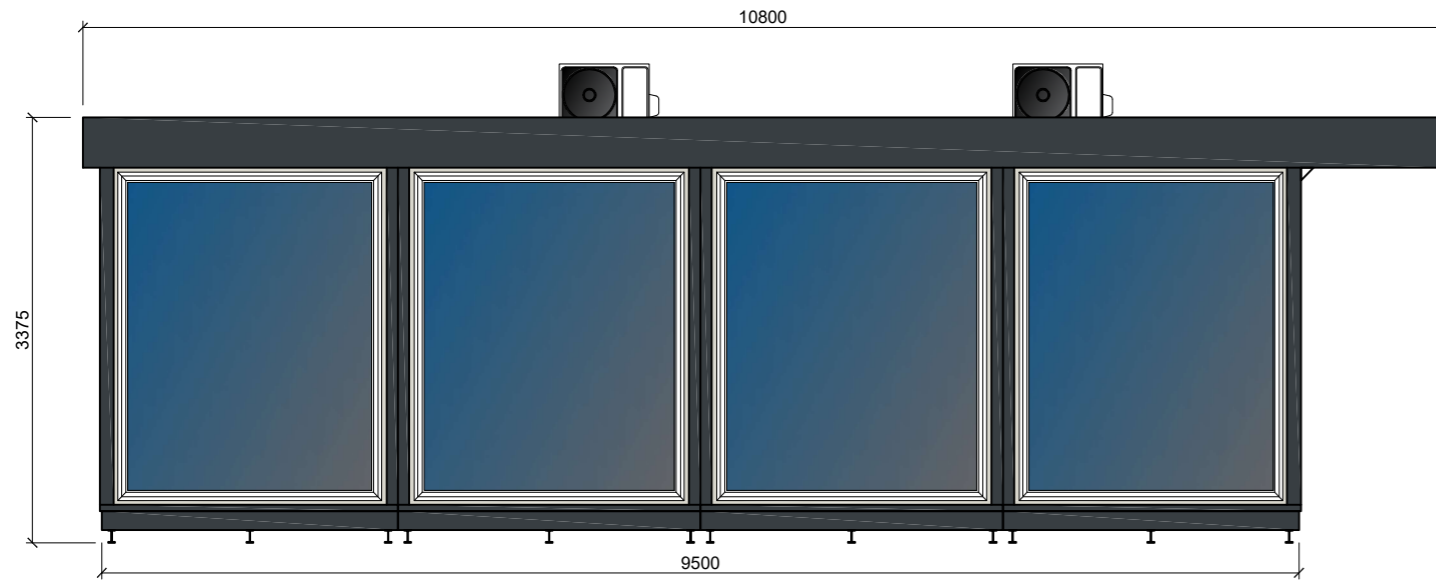
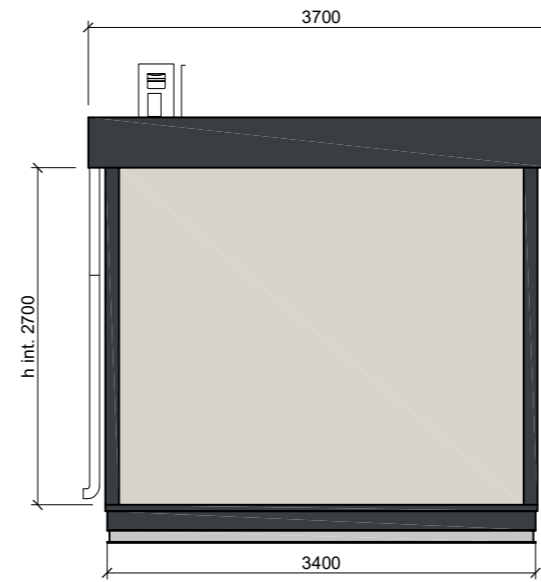


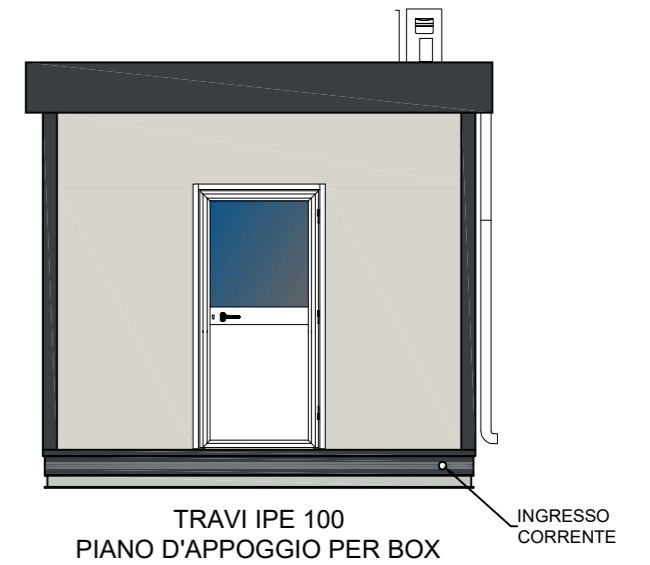
PROSPETTO FRONTALE



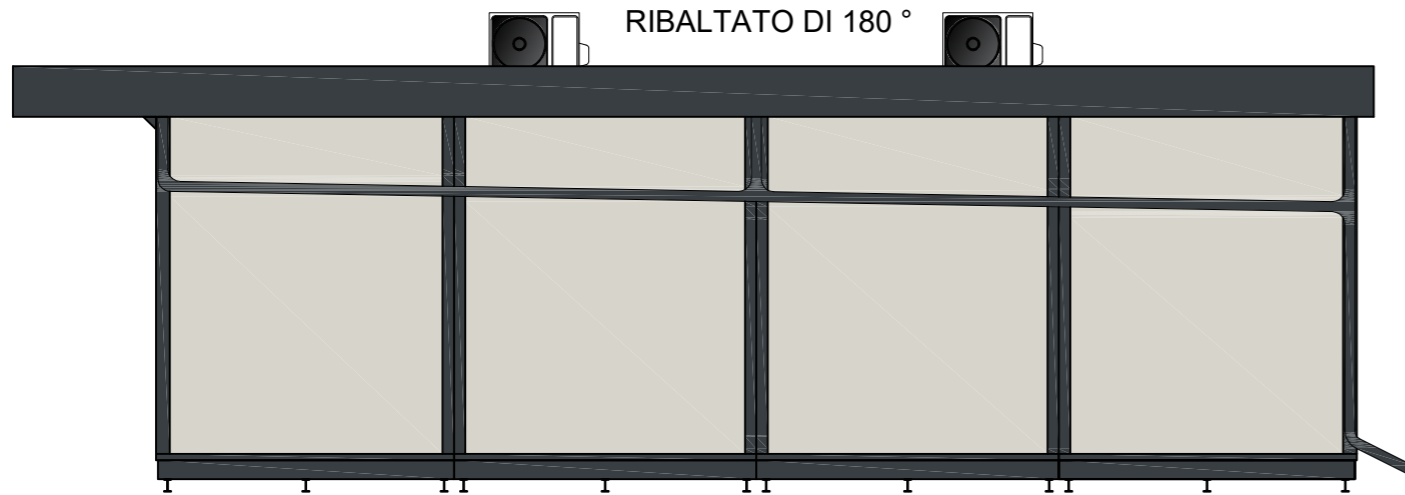
PROSPETTO LATERALE SX



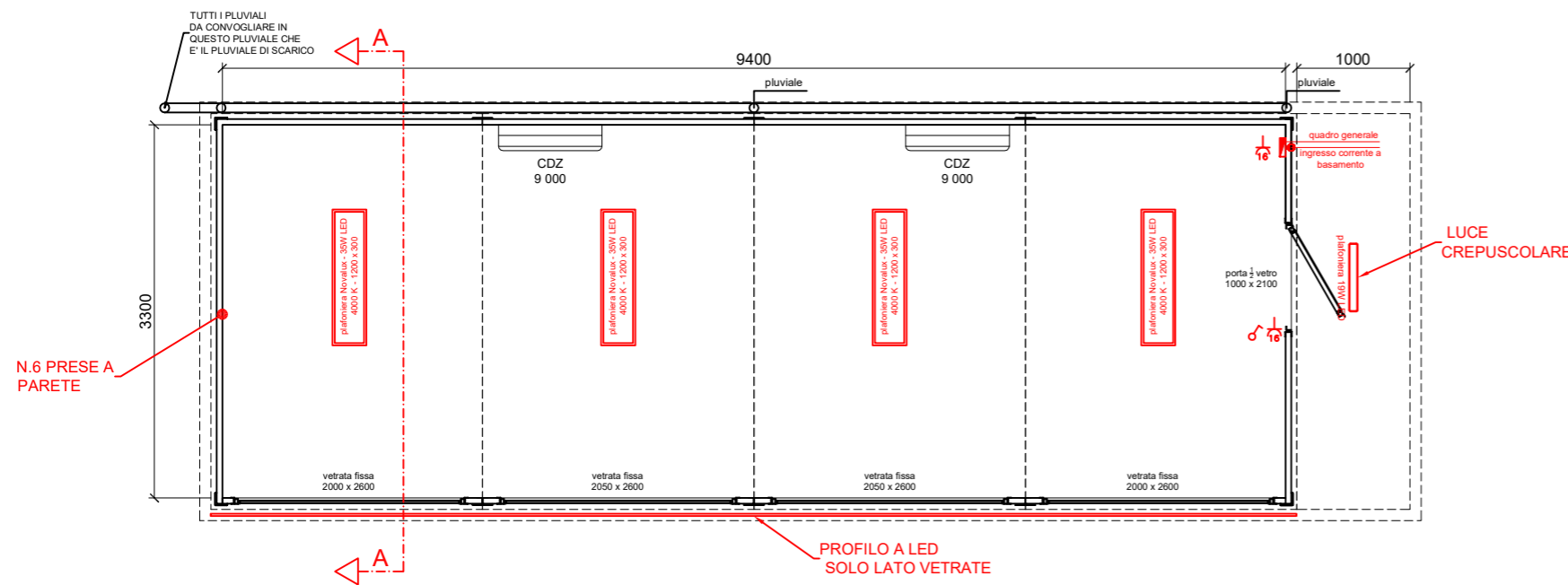
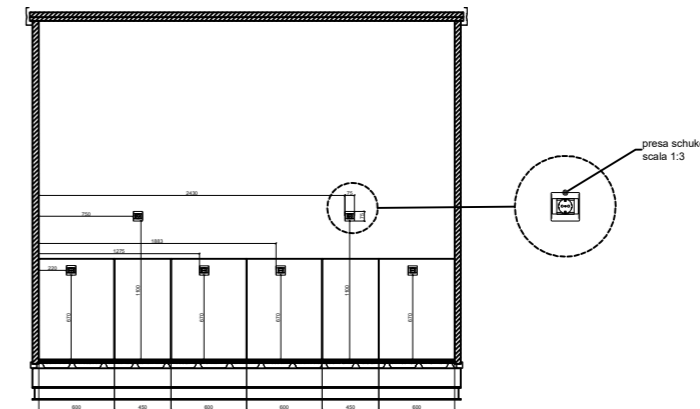
PROSPETTO LATERALE DX



PROSPETTO POSTERIORE
RIBALTATO DI 180°



POSIZIONE PRESE
SEZIONE AA



- NOTE:
- Vetro delle vetrate STOPSOL;
 - Macchina esterna CDZ a tetto;
 - Dim. presa L.75 x h.75 x p.60 mm;

PAVIMENTO VINILICO A DOGHE	PANNELLO BASAMENTO	---	---
	PANNELLO PARETE	sp. 50 mm	LISCIO
	PANNELLO TETTO	sp. 50 mm	LISCIO
	LAM. GRECATA	h. 40 mm	
	TIPO DI LEGNO	TRUCIOLARE	
	COLORE STRUTTURA	RAL 7016	

STATO DISEGNO			SCALA	
005	Revisione	31/10/2024	1:60	
004	Revisione	30/10/2024	NUMERO DISEGNO PG 4690	
003	Revisione	23/10/2024		
002	Revisione	23/09/2024		
001	Revisione	17/09/2024	CLIENTE	

PIGRECO GROUP SRL
Via A. Volta, 02
24060 TORRE DE ROVERI (BG)
tel. +39 035 4521281
www.pigrecomonoblocchi.it

TECNO PIEMONTE S.p.A.
ORGANISMO NOTIFICATO N° 192

S. VVP
1372-CPR-3064